



Village of L'Anse & L'Anse Township

2023 to 2027 Recreation Plan

A five-year plan to improve the recreational opportunities for the residents of the Village of L'Anse, L'Anse Township, and their visitors.



Prepared by:
Western Upper Peninsula Planning and
Development Region
400 Quincy St. 8th Floor, Hancock, MI 49930

Table of Contents

Introduction.....	1
Part 1 Community Description	1
Overview & History.....	1
Social Characteristics.....	3
Physical Characteristics.....	4
Part 2 Administrative Structure.....	5
Part 3 Recreation Inventory.....	6
Accessibility.....	7
Village of L’Anse -owned facilities.....	9
L’Anse Township-owned facilities.....	12
Other Facilities and Sites in the Village of L’Anse & L’Anse Township.....	15
Recreation Programs.....	18
Previous DNR Recreation Grants.....	19
Part 4 Planning Process.....	20
Part 5 Goals and Objectives.....	21
Part 6 Action Plan.....	23
Capital Improvement Plan.....	23
Potential Funding Sources.....	26
Part 7 – Appendix.....	27

Table of Figures

Figure 1. L’Anse Reservation.....	1
Figure 2. L’Anse Village and Township Location Map.....	2
Figure 3. L’Anse Area Recreation Committee Planning Organizational Chart.....	6
Figure 4. Seven Principles of Universal Design.....	8
Figure 5. Recreation Facilities Map, L’Anse Township.....	11
Figure 6. Recreation Facilities Map, Village of L’Anse.....	14

List of Tables

Table 1. Population Trends.....	3
Table 2. L’Anse Township Population Characteristics.....	3
Table 3. L’Anse Township Population Racial Characteristics.....	3
Table 4. L’Anse Village and Township Recreation Inventory & Accessibility Assessment..	7
Table 5. Capital Improvement Plan.....	22
Table 6. Potential Funding Sources.....	26

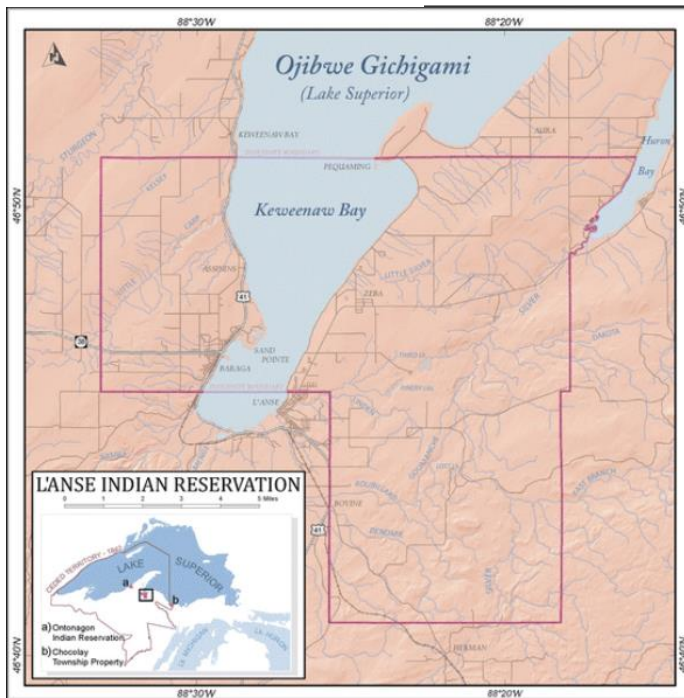
Part 1 - Community Description

Overview & History

The L'Anse area is located in north-central Baraga County on the south shore of Lake Superior. Intersected by Highway 41, L'Anse is approximately 35 miles southeast of Houghton, Michigan and 65 miles west of Marquette, Michigan. It is 385 miles almost directly north of Chicago, Illinois and just over 300 miles northeast of Minneapolis, Minnesota. It is 460 miles to Lansing, Michigan's State Capital.

The L'Anse Reservation includes lands on both sides of Keweenaw Bay and includes much of the Village of Baraga, and part of the Village of L'Anse and L'Anse Township. It is both the oldest and largest reservation in Michigan. These lands are a portion of the ancestral, traditional, and contemporary Lands of the Anishinaabeg ceded in multiple historic treaties.

Figure 1. L'Anse Reservation



Fur traders had been in the Keweenaw Bay area for many years, then during the fall of 1834, Daniel Meeker Chandler, a missionary for the Methodist Church, arrived in the Zeba area. He built a native village there following spring and was followed in 1843 by Father Frederic Baraga who started a Catholic Mission at Assinins on the west side of Keweenaw Bay.

L'Anse Township was established in May of 1846 and the Village of L'Anse in 1871. A new railroad line brought people and supplies into the area for trading, lumber, and mining. Henry Ford owned vast acreage of land within the township and county and numerous sawmills in the

area to support his business interests.

Today, L'Anse Township is the population center of Baraga County, where residents and visitors alike enjoy the beautiful shoreline of Lake Superior, forests, waterfalls, lakes, and streams. The lake, along with the region's rugged terrain, land cover, and climate provide for diverse recreational opportunities. The region is a natural destination for hunting, hiking, snowshoeing, and other non-motorized and motorized outdoor recreation.

Village of L'Anse & L'Anse Township Recreation Plan 2023-2027

Figure 2. L'Anse Village and Township Location Map





Village of L'Anse & L'Anse Township Recreation Plan 2023-2027

Social Characteristics

Population

In order to plan for future recreation projects, understanding the population characteristics of a community is important.

Table 1. Population Trends						
Municipality	1970	1980	1990	2000	2010	2020
L'Anse Township*	4,086	4,318	3,818	3,926	3,843	3,551
Baraga County	7,789	8,484	7,954	8,746	8,860	8,158

Source: Decennial U.S. Census

*Includes the Village of L'Anse

According to the 2020 Decennial U.S. Census, the population in L'Anse Township has continued a slow decline since the peak of the 1980 census. Population Characteristics for L'Anse Township, Village and Baraga County are shown in Tables 2 and 3.

Table 2. L'Anse Township Population Characteristics		
	Total Persons	Percent of Total
Male	1,809	49.4%
Female	1,854	50.6%
Median Age	46.8	
Under 5 Years Old	189	5.2%
5 to 19 Years Old	653	17.8%
20 to 64 Year Old	1,859	50.8%
65 Years and Older	962	26.2%
Labor Force (population over 16 yrs old)	1,526	51.2%
Population over 25: High School Graduate or Higher	2,417	92.1%
Population over 25: Bachelor's Degree or Higher	485	18.48%

Source: 2016-2020 American Community Survey 5 year estimates

Table 3. L'Anse Township Population Racial Characteristics		
	Total Persons	Percent of Total
White	2813	79.2%
Black or African American	3	.0008%
American Indian and Alaskan Native	411	11.6%
Other	24	.007%
Two or more races	300	8.4%

Source: 2020 Decennial U.S. Census



Village of L'Anse & L'Anse Township Recreation Plan 2023-2027

Physical Characteristics

Climate

The climate in the L'Anse area is more temperate than other regions of the same latitude. Summer high temperatures in L'Anse Township typically average between 70 to 82 degrees, and winter temperatures can be in the single digits to below zero. Annual precipitation is approximately 37 inches. With its location on the south shore of Lake Superior, the higher elevations inland can receive lake effect snow while the shoreline can receive less snow. The average snowfall between 1991-2020 was 207 inches with the greatest amount falling generally in January. Winter snowfall and moderate winter temperatures generate a healthy stream of snowmobilers, skiers, and snowshoers visiting the area. Conversely, in the summer, the mild weather provides respite from the heat. With the many beaches, stunning shoreline, forests and protected public lands, visitors and residents can enjoy a variety of recreational opportunities any time of the year.

Topography

The land in L'Anse Township rises from the shores of Lake Superior to the highest point in the Township, Mt. Arvon at 1,979 ft. The topography can be somewhat rugged, ranging from slightly sloped to steeply sloped terrain. The downtown commercial district of the Village of L'Anse is situated on a level area of land, then quickly rises when traveling away from the village proper. The rise however, is generally less than 10 percent and thus capable of supporting most types of development.

Other Physical Characteristics

Most of L'Anse Township and Baraga County overall is undeveloped and forested. There is some farming activity near the township community of Herman. Many streams and small lakes, although remote, contain relatively large fish populations. The forests outside the Village of L'Anse support abundant wildlife.

Transportation

Highway 41 is the major U.S. highway that passes through L'Anse Township and the Village of L'Anse, making it easily accessible for travel from major population areas by car. The Houghton County Memorial Airport 40 miles to the northwest, and the Sawyer International Airport is 80 miles to the east in Marquette County making the community well situated for convenient air travel from two airports. Dickinson and Gogebic Counties both have airports that are within comfortable driving distance between 80 and 115 miles respectively. Indian Trails provides bus service to and from cities across the Upper Peninsula, Michigan's Lower Peninsula, and Wisconsin.



Village of L'Anse & L'Anse Township Recreation Plan 2023-2027

Community Facilities

Both the Village of L'Anse and Township offices are located on North Main Street in the village. Other community facilities include the Baraga County Courthouse and Administration Building, L'Anse Area Schools, Evergreen Cemetery, Baraga County Memorial Hospital, Baraga County Road Commission Garage, and Michigan Department of Transportation Maintenance Garage.

Part 2 - Administrative Structure

Parks and recreation administration and program development are the responsibility of each entity's governing body. This includes programming; policy-making; and installation, operation, and maintenance of recreation areas. The Village of L'Anse and L'Anse Township both have a Recreation Committee. The operation and maintenance of Village and Township recreational resources is financed by local government funds, whereas capital development is funded by a combination of local, state, and federal funds. The current budget for recreation and maintenance for the Village of L'Anse is \$81,976 for parks, Meadowbrook Arena, and the Marina. The current budget, that includes the second round of ARPA Funds (\$88,288) for L'Anse Township is \$174,990 .

The Village of L'Anse Downtown Development Association (DDA) and the Village Council administer a tax increment financing district to fund public improvements. The L'Anse DDA has \$94,350 allocated towards the Meadowbrook Arena ice rink boards project, the current Marina project and the 2017 Marina project bond. Future plans for investments in improvements can be found in the Village of L'Anse Capital Improvement Plan that guides the community in the annual budgeting process. The improvements, of which recreation is an integral element, are part of a comprehensive revitalization program and are designed to serve as a catalyst for further investment. The funds can be used to help leverage state and federal recreation grant funds.

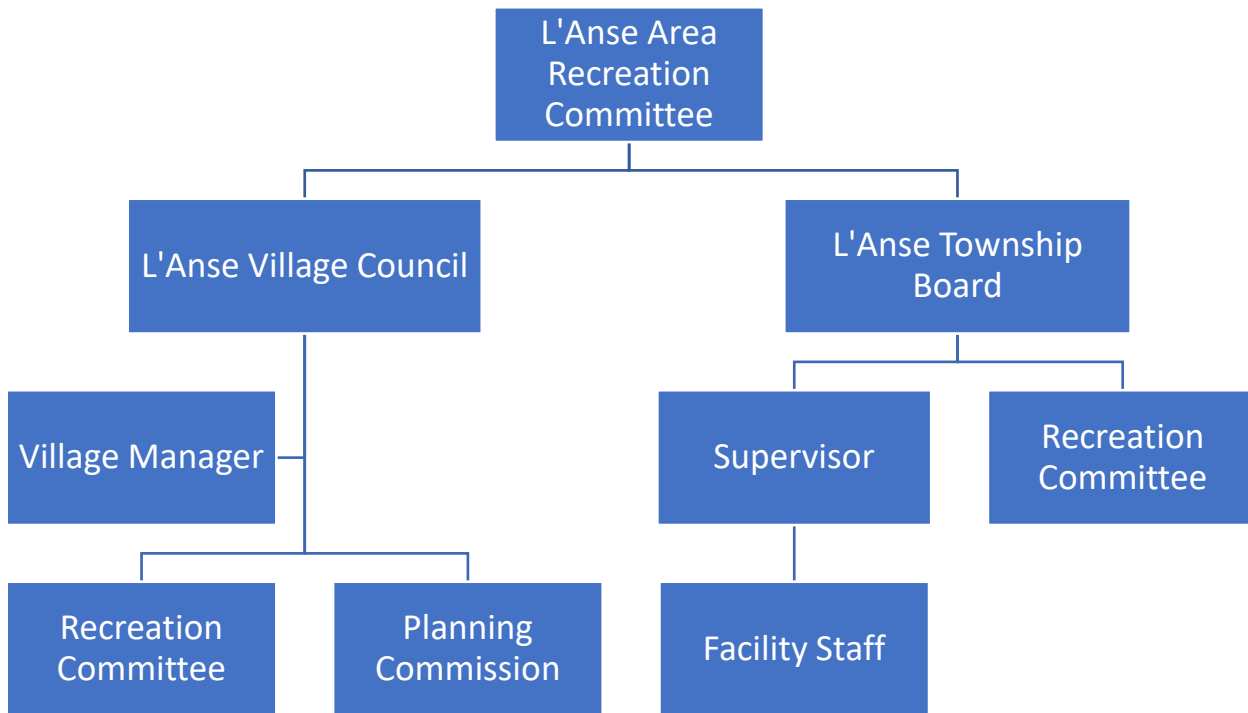
Volunteers also play an important role in the construction, upkeep of facilities, and in the past, have provided in-kind local match for recreational project grants. The community has had success in drawing upon this valuable human resource for projects and anticipates that success to continue for future projects.

Collaboration and cooperation are key for the Village and Township to operate, fund and enjoy recreation facilities. The overlapped boundaries, resources, and user groups provide ample opportunity for cooperation to the benefit of residents and visitors alike. The success of this collaboration can be seen over the past five-years in the improvements made to Meadowbrook

Park in Downtown L'Anse. Accordingly, an ad-hoc L'Anse Area Recreation Committee was established to explore and make recommendations concerning the scope of recreation activities and facilities in the L'Anse area for this Recreation Plan. The governing bodies will administer this Recreation Plan with guidance from their related permanent committees and staff.

The planning role of the joint Recreation Committee in relation to the individual government entities is shown in **Figure 3**. The chart is not intended to illustrate the hierarchy of authority in governance or plan adoption.

Figure 3. L'Anse Area Recreation Committee Planning Organizational Chart



Part 3 - Recreation Inventory

The Village of L'Anse and L'Anse Township have numerous parks and other recreation facilities. An inventory of these has been developed on past records, site visits, and input from community officials, staff, and the L'Anse Area Recreation Committee. Village-owned facilities range from a large, modern waterfront park and marina to a trail system and multipurpose building. L'Anse



Village of L'Anse & L'Anse Township Recreation Plan 2023-2027

Township has focused most of its past attention on the campground and park along Keweenaw Bay but most recently has turned its attention to the new Meadowbrook Park, the former football field adjacent to the Meadowbrook Arena. Most Village- and Township-owned facilities are located within the Village limits to serve the core population. A simple inventory of existing facilities and sites is in **Table 4**.

Table 4. Village of L'Anse & L'Anse Township Recreational Inventory and Accessibility Assessment

Park Name	Type	Ownership	Existing Facilities	Size	Accessibility
Waterfront Park	Community Park	Village of L'Anse	Playground equipment, 2 pavilions, picnic tables, grills, restrooms, beach, volleyball courts, bandstand, waterfront walkway with lighting, snowmobile trail access via Falls River bridge	2 Acres	4
Marina	Marina	Village of L'Anse	Docks, moorings, piers, boat launch, utility hookups	1 Acre	3
Third Street Park	Mini-Park/ Playground	Village of L'Anse	Baseball field, basketball courts, playground equipment, pickleball court	1 Acre	2
Meadowbrook Arena	Indoor Arena	Village of L'Anse	Artificial ice rink, warm-up area, and concession stand – building hosts hockey and skating and community events, also serving as a backup for outdoor events in inclement weather	1 Acre	4
6 th Street Basketball Court	Mini-Park	Sacred Heart; leased to Village	Basketball court and community garden	1 Acre	2
Pinery Lake Ski Trail	Ski Trail	Village of L'Anse	Ski trails	5 Kilo-meters	1
Falls River Trail	Non-Motorized Trail	CertainTeed; leased to Village	Hiking trail	3 Acres	1
L'Anse Township Hall	Indoor Multi-Use Facility	L'Anse Township	Second story used for dances and other recreation activities	Under 1 Acre	2



Village of L'Anse & L'Anse Township Recreation Plan 2023-2027

Table 4. Village of L'Anse & L'Anse Township Recreational Inventory and Accessibility Assessment

Park Name	Type	Ownership	Existing Facilities	Size	Accessibility
L'Anse Township Park & Campground	Community Park	L'Anse Township	Baseball/softball field, playground equipment, 3 pavilions, campground with 30 sites and dump station, restrooms, showers, approx. 3 miles of hiking trails	97 Acres	2
Second Sand Beach Park	Beach	L'Anse Township	Beach, picnic tables, grills	30 Acres	2
Meadowbrook Park	Community Park	L'Anse Township	Sledding Hill, open space	Nearly 2 Acres	1

Accessibility Assessment

The accessibility scores in Table 4 are based on existing data and evaluation by WUPPDR in conjunction with local officials. Scores are described below:

- Accessibility Score*
- 1 = none of the facilities/park areas meet accessibility guidelines
 - 2 = some of the facilities/park areas meet accessibility guidelines
 - 3 = most of the facilities/park area meet accessibility guidelines
 - 4 = the entire park meets accessibility guidelines
 - 5 = the entire park was developed/renovated using the principles of universal design (see **Figure 3**)

Scores are not included for facilities not owned or leased by the Village of L'Anse or L'Anse Township

Figure 4. Seven Principles of Universal Design

1. **Equitable Use:** The design is useful and marketable to any group of users.
2. **Flexibility in Use:** The design accommodates a wide range of individual preferences and abilities.
3. **Simple and Intuitive Use:** Use of the design is easy to understand.
4. **Perceptible Information:** The design communicates necessary information effectively to the user.
5. **Tolerance for Error:** The design minimizes hazards and the adverse consequences of accidental or unintentional actions.
6. **Low Physical Effort:** The design can be used efficiently and comfortably.
7. **Size and Space for Approach and Use:** Appropriate size and space is provided for approach and use

L'Anse Township owned facilities

L'Anse Township Park & Campground



L'Anse Township Park & Campground is located two miles north of the village on Skanee Road. The park includes a beach on the shores of Lake Superior, playground, gazebo, baseball/softball field, and three pavilions for day use. The large pavilion is ideal for larger gatherings and can be reserved. For nightly or weekly camping, a 30-site campground provides RV and tenting camping, showers, firewood, ice, drinks, and a dump station. All campsites have power and free WiFi is available at the

park. There are approximately three miles of trails for hiking, biking, and snowshoeing. The park receives heavy use by Township residents, while also drawing visitors from a much wider area. The Township is hoping to expand camping facilities and develop other amenities to provide an even greater draw. All park facilities are well-maintained. The park area is 97 acres including the 40-acre ball field.

Meadowbrook Park

In 2016 L'Anse Township purchased the former L'Anse Area Schools football field from the L'Anse Area Schools. The site is located on North Main Street within the village. The park features nearly 2 acres of wide open green space and a sledding hill. The Township intends to develop this site with multiple recreation facilities.





Village of L'Anse & L'Anse Township Recreation Plan 2023-2027

L'Anse Township Hall

The *L'Anse Township Hall* is a community and government center located on North Main Street in downtown L'Anse. It is a community center that accommodates dances, exercise, and other recreational activities on its second floor.



Second Sand Beach Park

Second Sand Beach Park, just east of the community of Pequaming, is a 30-acre site with a beach, picnic tables, grills, and portable toilet. It is the primary public beach in L'Anse Township, frequented by a large number of area residents. A new ADA access path and picnic area has been added.

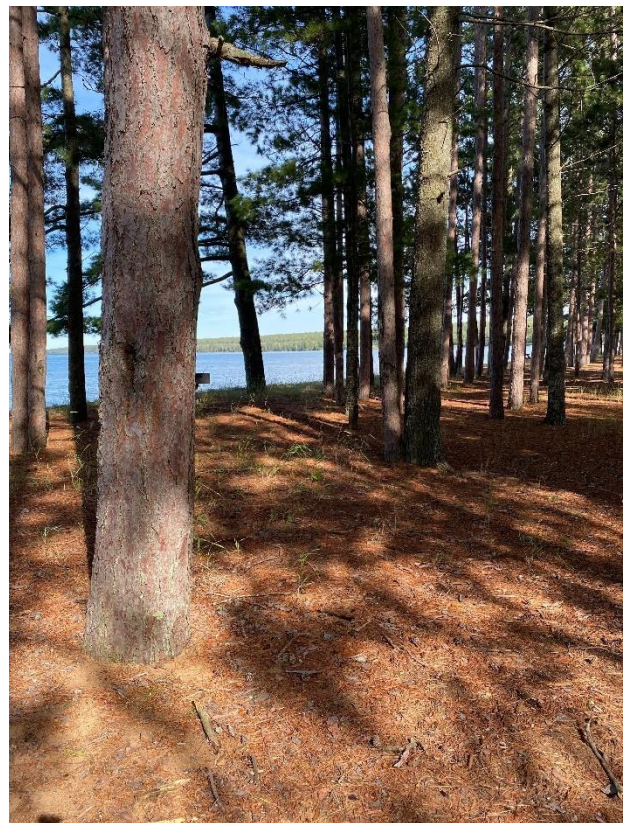
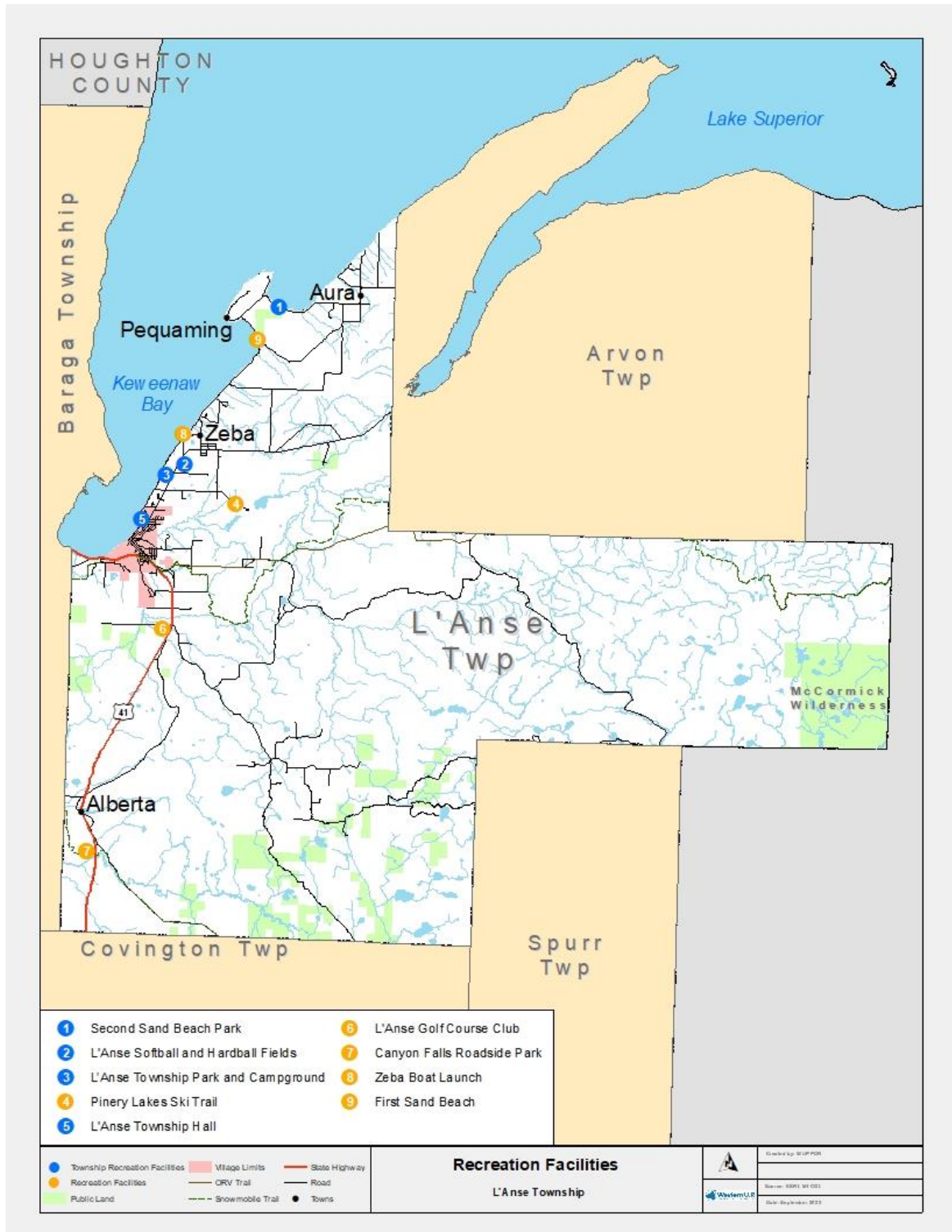


Figure 5. Recreation Facilities Map, L'Anse Township



Village of L'Anse owned facilities

Waterfront Park

The Waterfront Park is the village's crown jewel of recreation. It is located downtown on Keweenaw Bay, providing easy access to village residents and visitors. A Splash Park, playground equipment, and volleyball courts are available for recreation and supplemented by picnic tables, grills, two pavilions, and a beach. Restrooms and a band shell (with weekly summer concerts) are also available. A waterfront trail runs through the park and connects with the downtown business district. Snowmobile trail access is also provided via the adjacent Falls River bridge.



Marina

Adjacent to Waterfront Park is the one-acre *Marina* with 16 docks, piers, and a boat launch. A Marina Master Plan (MMP) was developed in 2014 and is being implemented in phases, with most of Phase 1 completed in 2017. Based on the MMP and subsequent progress, a

description of recreational boating facilities information has been developed as a component of this Recreation Plan; due to its length, it has been incorporated as **Appendix C**.



Meadowbrook Arena

The *Meadowbrook Recreation Building* is an indoor arena with an artificial ice rink, warm-up area, and concession stand. The building is used for hockey, skating, and community events.





Village of L'Anse & L'Anse Township Recreation Plan 2023-2027

Third Street Park

Third Street Park is a neighborhood facility with a baseball field, basketball courts, a playground, and a Pickleball Court.



Pinery Lake Ski Trail

The five-kilometer *Pinery Lake Ski Trail* is a great summer hiking trail as well as a winter ski trail. The trail is groomed for classical skiing, funded by donation. The Baraga County Convention and Visitors Bureau (BCCVB) provides trail maintenance.

Falls River Trail

The Falls River Trail is owned by CertainTeed but is Leased to the Village of L'Anse for public access. It is a gentle walking and hiking path adjacent to the Waterfront Park, and to the Village. The trail meanders along the river and leads to a small waterfall that is popular for fishing.

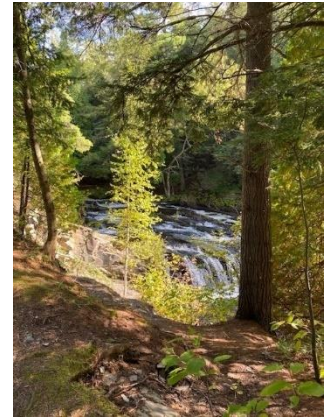
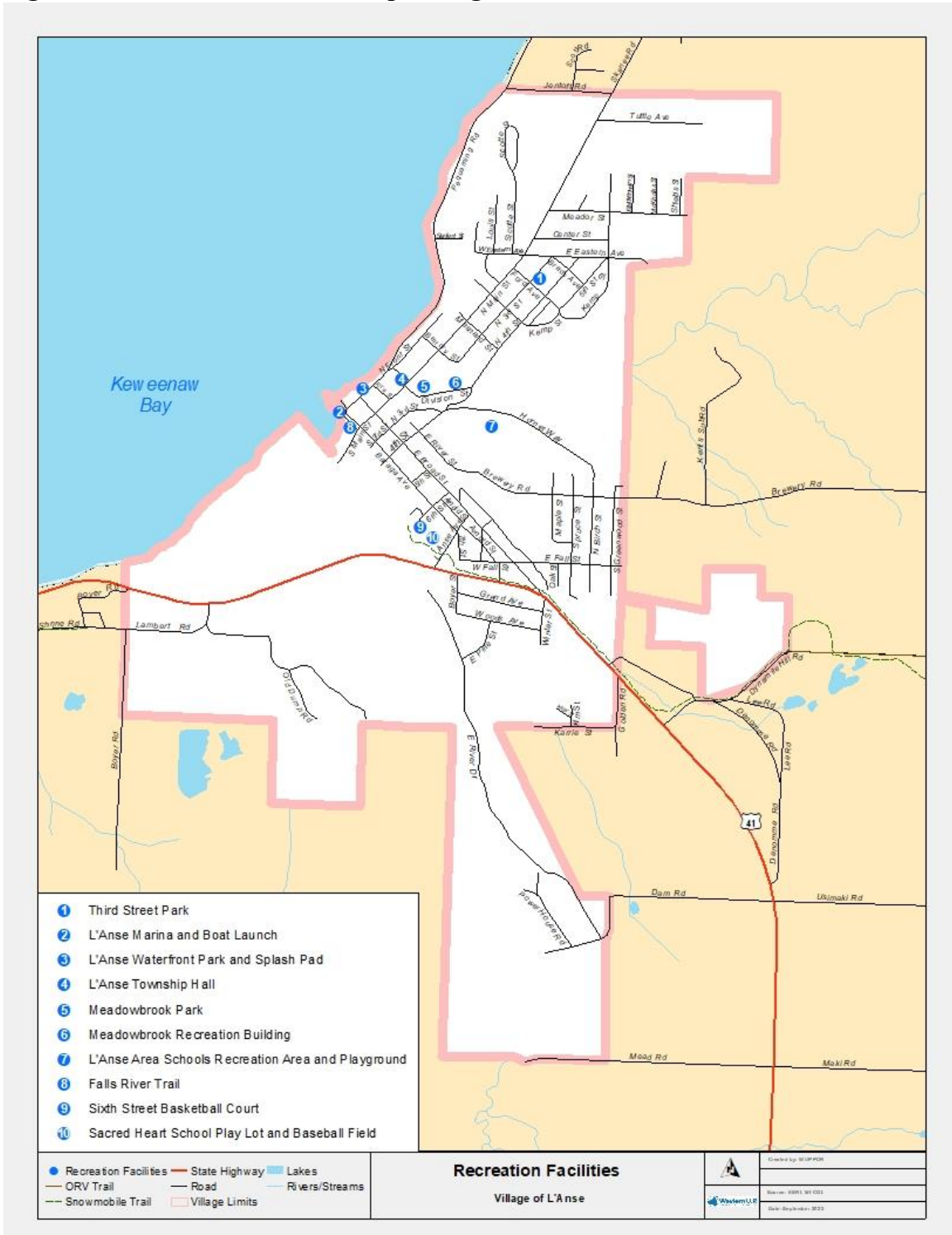


Figure 6. Recreation Facilities Map, Village of L'Anse



Other Facilities and Sites in the Village of L'Anse and L'Anse Township

L'Anse Elementary School Playground

The school area has an abundance of playground equipment plus a basketball court and multiple picnic tables.



L'Anse Area Schools Village Park

This park serves the community and a broader region, being used for regional school athletic events. The park includes all the amenities of a school sporting complex, a football field, soccer field, and track, baseball/softball diamond, sledding hill, gazebo and a 2.1 mile nature trail. Universal design (see Figure 2) was taken into account in the design and for more recent construction.

L'Anse Area School Building

The L'Anse Area School Building includes a weight room and three gymnasiums for regional basketball and other athletic events. The building is also used by the community for senior exercise.

Sacred Heart School (private)

Although Sacred Heart School is private, there are numerous facilities that are open to the public. The Sacred Heart School Play Lot, has a basketball court and playground equipment. The Little League Baseball Field features a batting cage. Another facility, the 6th Street Basketball Court is leased to the Village. A community garden is located adjacent to the basketball court.



Village of L'Anse & L'Anse Township Recreation Plan 2023-2027

Zeba Boat Launch

The Zeba Boat Launch on Bayshore Drive just north of Whirl-i-Gig Road is a 1.3-acre KBIC-owned beach in L'Anse Township, just north of the Village offering 575 feet of Keweenaw Bay shoreline. It has a boat launch as well as a picnic area.



First Sand Beach

This beach (formerly known as the Pequaming Beach) is a swath of land southeast of the community of Pequaming spanning 4,500 feet of shoreline under various public ownerships.

L'Anse Golf Club

The L'Anse Golf course is a privately owned 80-acre golf course located in L'Anse Township, four miles south of the village. It is a 9 hole, 36 par course. There is also a driving range, clubhouse, and practice green.



Canyon Falls Roadside Park

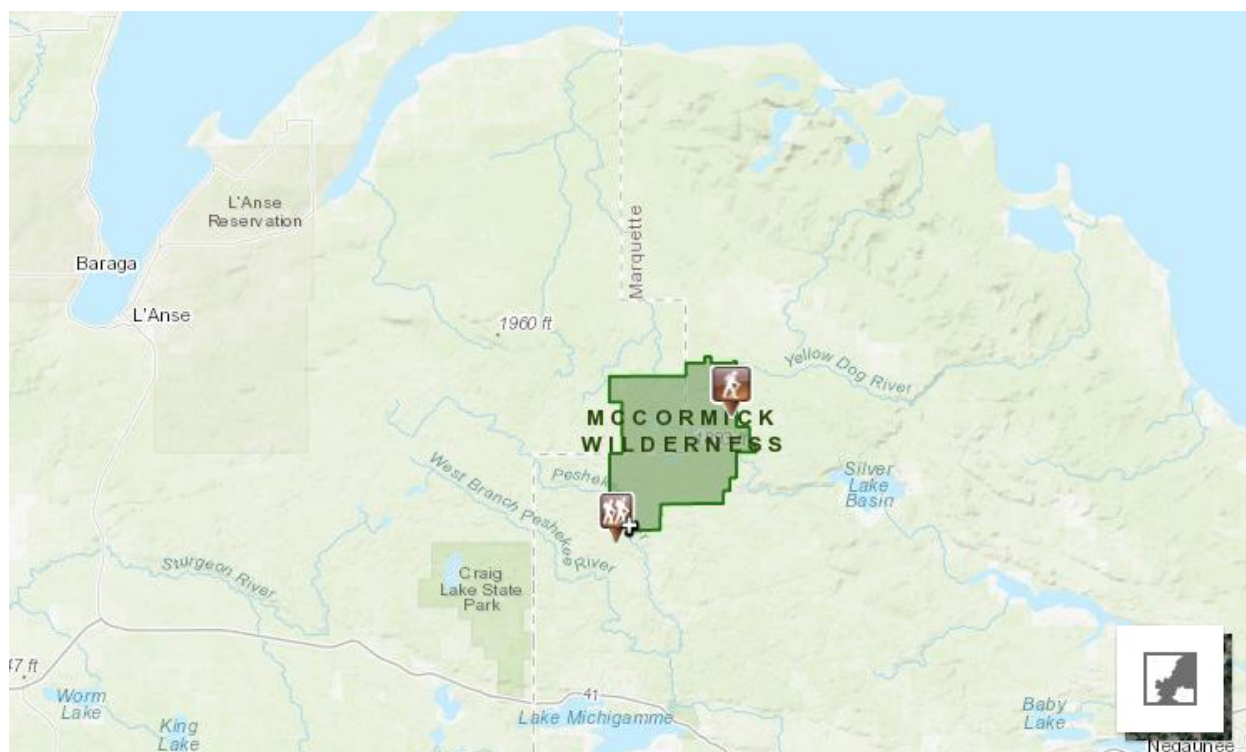
The Canyon Falls Roadside Park is owned by the Michigan Department of Transportation (MDOT), Michigan Technological University and the United States Department of Agriculture Forest Service (USFS). Canyon Falls and its surrounds have recently become widely known as the “Grand Canyon of Michigan”. It is located 10 miles south of the Village of L'Anse on Highway 41 in L'Anse Township. The Park is also an access point for the North Country Scenic Trail



Photo courtesy Robert Witting

McCormick Wilderness

The McCormick Wilderness, located in the southeastern corner of L'Anse Township is part of the Ottawa National Forest. It straddles portions of both Baraga County and Marquette County. The area best seen by backpacking and is wilderness therefore camping is primitive and low impact camping techniques are recommended. Day hiking is available along the Yellow Dog River and Yellow Dog falls.



Mt. Arvon

Michigan's highest peak, Mt. Arvon, rises 1,979 feet is located in the Huron Mountain Range in L'Anse Township. The roads to the summit parking area are gravel. The summit is a ½ mile trek from the parking area.

North Country National Scenic Trail

Baraga County includes many miles of this hiking trail which extends from New York to North Dakota. This segment is also part of Michigan's Iron Belle Hiking Trail, which extends from Ironwood to Belle Isle, Michigan. The Peter Wolfe Chapter of the North Country Trail Association is responsible for 125 miles of the North Country hiking trail through the Upper Peninsula of



Village of L'Anse & L'Anse Township Recreation Plan 2023-2027

Michigan. Within Baraga County the trail passes through multiple land ownerships including Craig Lake State Park and the Ottawa National Forest and passes near a number of waterfalls including Tibbets and Canyon Falls. Access to the trail is available at the Canyon Falls Roadside Park on US 41.

Recreation Programs

The area school districts offer physical activity and education along with an organized sports program. A number of additional recreational activities are available to the community through the L'Anse Baraga Community Schools. Local private groups offer youth programs as well, including Little League, Softball Association, Soccer Association, 4-H Clubs, and the L'Anse Hockey Association. Other organizational recreation opportunities include fishing tournaments, bowling leagues and tournaments, and golf leagues and tournaments. Both the Baraga County Trail Authority and Baraga County Trails in Motion provide assistance in caring for the motorized and non-motorized trails in the area.

Aside from athletics and community recreation, Baraga County offers a wealth of outdoor recreational opportunities. Over 100,000 acres of national, state, and commercial forestland in Baraga County are available for outdoor recreation. Commercial forestland enrolled in and managed in accordance with Michigan's Commercial Forest Act allows public fishing, hunting, and trapping by right and often allows other activities, such as hiking and camping, with landowner consent.

Nearby recreation facilities used by area residents outside those provided by the Village of L'Anse and L'Anse Township include the Baraga State Park with 115 campsites and other amenities; Ojibwa Recreation Area, a smaller Keweenaw Bay Indian Community-owned campground with other amenities; numerous waterfalls (many of which are located in L'Anse Township); Silver Mountain; and Mount Arvon, Michigan's highest natural peak. There are also many miles of established snowmobiles trails, ORV trails, cross-country ski trails, and hiking and nature trails, including many miles of the North Country National Scenic Trail (easily accessible from the Canyon Falls Roadside Park). Some of these trails allow for multiple uses-both motorized and non-motorized- on a single route.



Village of L'Anse & L'Anse Township Recreation Plan 2023-2027

Previous DNR Recreation Grants

DNR recreation grants previously received by the included entities are as follows:

Village of L'Anse

L'Anse Multi-Use Building: #26-00507 of 1973, closed, in the amount of \$80,000

- Multi-use building land development (serving intended purpose); lease from L'Anse Area Schools expired in 2014

L'Anse Waterfront Park: #26-01429 of 1985, closed, in the amount of \$38,154

- Picnic equipment (good condition)
- Picnic pavilion (good condition)
- Play equipment (good condition)
- Pathways (good condition)
- Landscaping (good condition)
- Archway/signing (good condition)
- Restrooms (good condition)
- Fencing (good condition)
- LWCF sign

Arena Improvements: #BF92-025 of 1992, closed, in the amount of \$37,500

- Masonry outside wall (good condition)
- Mechanical, plumbing, and electrical systems (functional)

L'Anse Harbor Boat Launch: #TF94-251 of 1994, closed, in the amount of \$91,600

- Marina basin work (serving intended purpose)
- Boat launch (good condition)
- Parking area (good condition)
- Landscaping/site work (good condition)

Lakeshore Property Acquisition: #TF98-043 of 1998, withdrawn, in the amount of \$50,000

Waterfront Park Splash Pad Improvements: #RP15-0062 of 2015, PA Executed, in the amount of \$45,000

- Splash park (completed)



Village of L'Anse & L'Anse Township Recreation Plan 2023-2027

Marina Infrastructure Improvements Phase I: Waterways Program, in the amount of \$260,000

- Applied for in 2015; grant was awarded after recreation plan was amended to resolve deficiency. The majority of Phase I improvements from the Marina Master Plan were completed. Future funding requests are expected for later phases.

Waterways Grant for Marina Improvements in the amount of \$60,000 with \$60,000 match

- Marina Floating Pier & Concrete Barrier Wall Project: Included a concrete barrier wall on the beach and replacement of the floating pier in the marina. Project completion is expected to be spring of 2023.

L'Anse Township

Electrical Improvements at L'Anse Township Park: #RP15-0063 of 2015, PA Executed, in the amount of \$45,000

- Utilities (primarily burying of electrical lines) (completed)

Part 4 - Planning Process

This Recreation Plan was developed with assistance from the Western Upper Peninsula Planning and Development Region (WUPPDR). Planning was initiated with the formation of a joint Recreation Committee representing each entity, with a total of eight participants. The Committee first met on July 18, 2022, to review and update the inventory, goals & objectives, and projects listed in the previous recreation plan. Priorities were identified and input taken on potential projects for the action plan. The Committee also took the opportunity to review and edit questions for the community survey. The Committee agreed to conduct a joint survey with the Baraga County Recreation Committee to avoid survey fatigue and garner a wider range of respondents. The survey, launched from the Survey Monkey platform on August 22, 2022, was open until October 15, 2022 and successfully recorded 320 responses. A paper copy of the survey (**Appendix E**) was made available at the Township, Village, and County administrative offices, and the county's public library. The link and the QR code to the Survey Monkey application was promoted on WUPPDR's and the L'Anse Township websites and Facebook pages. Notice of the survey was sent to all L'Anse Village utility customers in their monthly billing in September. Press releases were sent to various media for Release on or after August 26, 2022, and published in the Daily Mining Gazette on September 20, 2022 (**Appendix D**).



Village of L'Anse & L'Anse Township Recreation Plan 2023-2027

The Recreation Committee once again met on November 3, 2022 to review the results of the survey (**Appendix F**) and incorporate the results into the plan update.

The 30-day review-and-comment period beginning November 12, 2022 was publicized in a notice on November 9, 2022 in the L'Anse Sentinel (**Appendix G**). The draft plan was available via the WUPPDR website, www.wuppdr.org, and in print at the L'Anse Village Office and Township Office. A notice of Public Hearing was published on November 30, 2022 (**Appendix H**) and held December 12, 2022 at the L'Anse Village Council Chambers. The hearing was attended by quorums of the Village and Township governing bodies. No additional comments were offered, but an omission in Table 5, Capital Improvements Plan was noted; L'Anse Township is the location and has ownership of the project 'install electric lights and receptacles at ballfields'. Subsequently, the governing bodies met separately to adopt the plan (**Appendix I**). The L'Anse Township Board approved the Resolution to Adopt the 2023-27 Recreation Plan during a Special Meeting and the L'Anse Village Council approved the Resolution to Adopt the 2023-27 Recreation Plan during their regular meeting, both on December 12, 2022 and held in the Village Council Chambers (**Appendix J & K**).

Part 5: Goals and Objectives

The goals of the L'Anse Area Recreation Committee are outlined in the outer bullet points below, with the narrower, more functional objectives in the inner bullet points:

- Increase community involvement in current and future recreation programs
 - Utilize volunteers in operations and construction to the extent possible in lieu of external or local public funding
 - Encourage continuation of community and school athletic organizations
 - Allow use of recreation facilities at low or no cost for public recreational activities and community events
- Promote healthy lifestyles and attitudes towards community recreation programs
- Support projects that are attractive and easily accessible to residents and visitors
 - Construct new and modify existing sites/facilities in accordance with Universal Design guidelines
 - Place low-impact facilities, such as playgrounds, within residential neighborhoods to the extent feasible



Village of L'Anse & L'Anse Township Recreation Plan 2023-2027

- Prioritize design, development, and maintenance of signage and landscaping
- Ensure that facilities are compatible with area natural resources and environs
 - Preserve existing natural resources to the extent possible when altering sites
 - Maintain existing undeveloped/natural areas in their current state as feasible
- Capitalize on recreation facilities and natural resources to promote tourism and economic development
 - Emphasize outdoor recreation and the natural environment in local or countywide branding/promotional campaigns
 - Continue to improve the Village of L'Anse Marina consistent with the Marina Master Plan
- Identify and explore multiple internal and external funding sources to finance recreation projects
 - Stay apprised of changing DNR funding opportunities and priorities
 - Work creatively with the community and local government to set aside money or in-kind contributions to fulfill local match requirements
- Acquire and develop significant properties for recreational use as they become available
 - Analyze the benefit of properties for sale adjacent to existing parks for potential expansion
 - Develop L'Anse Township's Meadowbrook Park in Downtown L'Anse.
- Support, when possible, projects that have multiple uses and year-round facilities
 - Develop parallel and compatible winter/summer uses of sites and facilities
 - Encourage volunteer support and participation.
- Improve both motorized and non-motorized trail opportunities, connectivity, access, collaboration, and public awareness.
 - Support "complete streets" principles.



Village of L'Anse & L'Anse Township Recreation Plan 2023-2027

- Continue development of dedicated non-motorized trails within the Village and Township in collaboration with volunteers
- Support the Keweenaw Bay Indian Community in developing the Keweenaw Bay non-motorized pathway linking Zeba and Sand Point; collaborate with State and Federal organizations to improve connectivity.
- Support efforts to improve and interconnect segments of the North Country National Scenic Trail
- Work with trail groups/enthusiasts, tourist-oriented businesses and organizations, and DNR to identify and resolve gaps in trail networks
- Encourage access for and reduce conflicts with non-motorized trail users
- Support and encourage the development of handicap accessible trails

Part 6 - Action Plan

Capital Improvements Plan

Recreation priorities have been identified according to the current and projected needs of the Village of L'Anse and L'Anse Township and have been addressed in the following Capital Improvements Plan for the next five years. Projects are listed in **Table 5**.

Table 5. Capital Improvements Plan			
Project	Location / Owner or Jurisdiction	Estimated Cost	Potential Funding
2023			
Playground equipment (purchase and replacement); picnic tables	L'Anse Township Park & Campground / L'Anse Township	\$55,000	ARPA Local
Improvements to ballfields, improve dugouts	L'Anse Township Park & Campground/L'Anse Township	\$10,000	Local



Village of L'Anse & L'Anse Township Recreation Plan 2023-2027

Table 5. Capital Improvements Plan			
Project	Location / Owner or Jurisdiction	Estimated Cost	Potential Funding
2023 Continued			
Pickleball Court Equipment	3 rd Street Park/Village of L'Anse	\$1,000	Local
Handicap accessible porta-potty, picnic tables, platform	2 nd Sand Beach/ L'Anse Township	\$30,000	PHF/Local
Structure for Farmer's Market	Meadowbrook Park/Village of L'Anse/ L'Anse Township	\$75,000	PHF/Local
10 Parking Spaces at Meadowbrook Park	Meadowbrook Park/ L'Anse Township	\$8,000	Local
Upgrade 6 sites to 50amp Service	L'Anse Township Park & Campground/ L'Anse Township	\$2,500	Local
Upgrade restroom Facilities	L'Anse Township Park & Campground /L'Anse Township	\$10,000	Local
Floating Pier and Seating Wall	Marina/Village of L'Anse	\$120,000	DNR/Local
Trail Connectivity-Linden Creek to School Trail System	Meadowbrook Park-Trout Trail-School/ Village of L'Anse & L'Anse Township	\$75,000	DNR/Local
Falls River Trail	CertainTeed & Village of L'Anse/ Village of L'Anse	\$20,000	DNR/DOT/ Local



Village of L'Anse & L'Anse Township Recreation Plan 2023-2027

Table 5. Capital Improvements Plan			
Project	Location / Owner or Jurisdiction	Estimated Cost	Potential Funding
2024			
Dog Park	L'Anse Township Park & Campground /L'Anse Township	\$60,000	Local
Trout Trail-Linden Creek to River Falls with Fishing Piers	Village of L'Anse / Village of L'Anse	\$75,000	DNR/Local
Six additional vehicle trailer pads, including site preparation and utilities	L'Anse Township Park & Campground/ L'Anse Township	\$50,000	DNR/Local
Marina Improvements, Phase 2 of Marina Master Plan	Village of L'Anse / Village of L'Anse	1,100,000	DNR/Local
Acquisition and storage of trail maintenance tools	Village of L'Anse	\$1,500	Local
Meadowbrook Arena Improvements-replace boards	Village of L'Anse/ Village of L'Anse	\$300,000	DNR/Local
2025			
Additional playground equipment at Waterfront Park	Village of L'Anse / Village of L'Anse	\$50,000	DNR/Local
Install electric receptacles and lighting at ballfields	L'Anse Township/ L'Anse Township	\$300,000	DNR/Local
2026			
Marina Improvements, Phase 3 of Marina Master Plan	Village of L'Anse / Village of L'Anse	\$450,000	DNR/Local
Mini Golf/Laser Tag/Disc Golf at Meadowbrook Park	Meadowbrook Park L'Anse Township/ Village of L'Anse	\$100,000	DNR/Local



Village of L'Anse & L'Anse Township Recreation Plan 2023-2027

Table 5. Capital Improvements Plan			
Project	Location / Owner or Jurisdiction	Estimated Cost	Potential Funding
2026 Continued			
Additional Playground Equipment at 3 rd Street Park	Village of L'Anse/ Village of L'Anse	\$25,000	DNR/Local
2027			
Construction of an outdoor ice rink and ice skating path at Meadowbrook Park	Meadowbrook Park Village of L'Anse / L'Anse Township	\$200,000	DNR/Local
Connect Linden Creek Trail to Pinery Lakes Trail to L'Anse Township Park	Village of L'Anse / L'Anse Township/KBIC	\$250,000	DNR/Local

Potential Funding Sources

Funding sources available for recreation programs and projects within the Village of L'Anse and L'Anse Township include these in **Table 6**. Note that for many grant programs, projects that commit more than the minimum local match receive additional points in scoring and evaluation.

Table 6. Potential Funding Sources

Description	Minimum Local Match	Source
County/Local Funds	N/A	Local
Community Foundation/Other (local service organizations and businesses)	N/A	Local
Michigan Natural Resources Trust Fund (MNRTF) (\$15,000-300,000 grant for development projects)	25%	DNR
Land & Water Conservation Fund (LWCF) (\$30,000-\$150,000 grant)	50%	DNR
Boating Infrastructure Grants (BIG)	25%	DNR
Waterways Program Grants	50%	DNR
Recreation Passport Grants (Up to \$150,000 grant in 2022)	25%	DNR
Dam Management Grant Program	10%	DNR
Off-Road Vehicle Trail Improvement Program	N/A	DNR



Village of L'Anse & L'Anse Township Recreation Plan 2023-2027

Table 6. Potential Funding Sources

Description	Minimum Local Match	Source
Snowmobile Trail Improvement Program	N/A	DNR
Recreational Trails Program	N/A	DNR
Spark Grant Program (\$100,000 up to \$1,000,000)	N/A	DNR
Law Enforcement Grants (Marine Safety, ORV, Snowmobile)	N/A	DNR
Coastal Zone Management (CZM) (\$10,000-\$100,000 in FY2023)	50%	DEQ
Michigan Department of Transportation (MDOT)	Varies	MDOT
United States Department of Agriculture – Rural Development (USDA-RD)	Varies	USDA
MEDC Tribal Allocation (KBIC involvement)	Varies	MEDC

Part 7 - Appendix

Appendix A: 2017 Village of L'Anse Master Plan Excerpt

Appendix B: 2020 L'Anse Township Master Plan Excerpt

Appendix C: Village Marina Master Plan

Appendix D: Survey Publicity

Appendix E: Print Survey Form

Appendix F: Survey Results

Appendix G: Public Review Publicity

Appendix H: Public Comment Notice Affidavit

Appendix I: Public Hearing Notice Affidavit

Appendix J: Public Hearing Meeting Minutes

Appendix K: Plan Adoption Resolutions